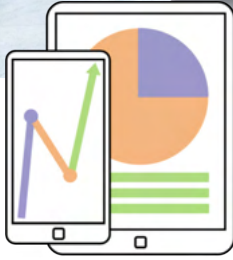
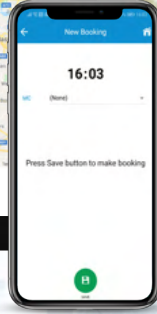
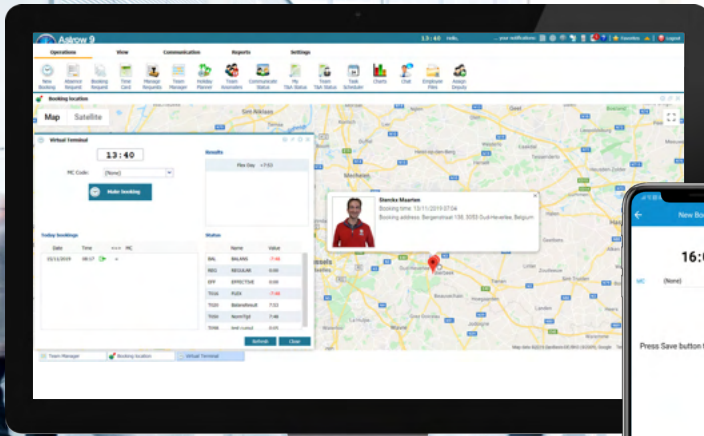
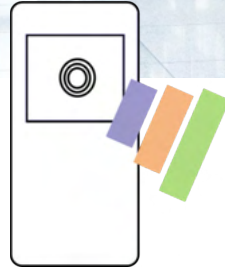


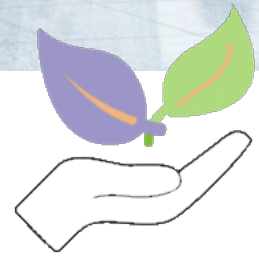
VT Virtual terminal



Mobile-friendly
Android and iOS
compatible



**Frictionless
registrations**
Just as easy as a terminal!



Eco-friendly
Reduced
hardware costs

MOBILE, JUST LIKE YOU

Make bookings from any computer or mobile device using the Virtual Terminal (VT). It's a virtual alternative to a traditional time registration terminal. Not only is it compatible with all common internet browsers, it is also available as a mobile app on recent Android and iOS devices. For remote bookings, location data can be required.

Virtual terminal can be a cost-effective alternative, especially for smaller company sites, as it doesn't require any hardware investments.

FLAWLESS REGISTRATION PROCESS

The Virtual Terminal offers the exact same user-friendliness as your well-trusted traditional time registration terminal. Making a booking is done in just one click of a button. MC-codes or cost centers can easily be added. To compensate the time, it takes to startup the PC and make the booking, one can also grant a certain amount of grace time. For each booking (GO, OUT, IN and END), the grace time can be set individually.

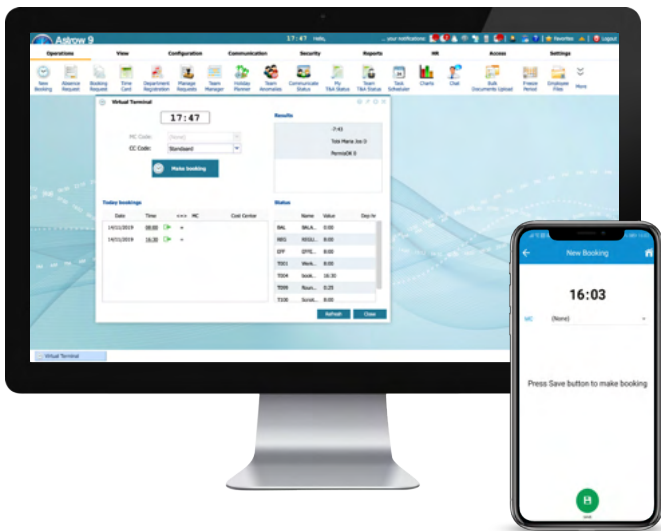
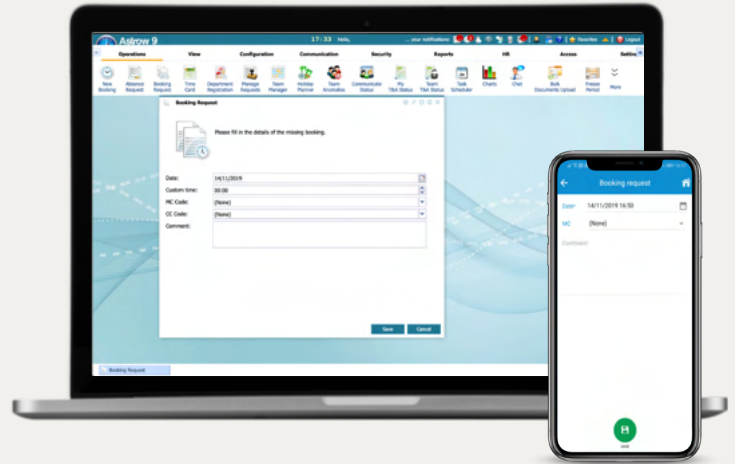
A SMALL GESTURE FOR NATURE

By replacing traditional time registration terminals by a digital alternative, you make considerable savings on costs (terminal + badges) and at the same time contribute to nature by reducing materials. We firmly believe that our innovative solutions will contribute to the user's ease of use and the environment in general.

MAKING BOOKINGS

Instead of scanning a badge, users simply click a button in order to make a booking. These bookings can be linked to an MC code or cost centre.

For mobile employees, the app also offers the possibility to include the location (coordinates) from which the booking was made.



TECHNICAL REQUIREMENTS

In order to start using the Virtual Terminal, all you need is a user name and password. The VT is compatible with all common internet browsers (Internet Explorer, FireFox, Google Chrome, ...) and recent Windows versions (Windows 8 and up).

The Mobile VT can be obtained separately and is compatible with all recent Android and iOS devices. To track the location bookings were made from, the location data needs to be activated.

TERMINAL OVERVIEW

Amano offers a wide variety of terminals, all of which are adapted to the needs our customers may have.

- In the Mobile range, we have the Astrow app for individual use, and the MT (Mobile Terminal) which is shared among colleagues in the same team.
- The Fixed range consists of the ST-25 terminal with optional fingerprint technology and the VT (Virtual Terminal), its software-only counterpart.

	Mobile	Fixed
Personal	Astrow app 	VT
Shared	MT 	ST-25